

It's Time to Grow

Your vision. Your community. Your Freight Farm.

Meeting Agenda

05 **About Freight Farms**

06 **Our Solutions**

13 **Key benefits and Cost**

15 **Q&A**

17 **Next Steps**



A Mission to Contribute to a Sustainable Future

Freight Farms believes in building a distributed farming network to democratize access to fresh food and is committed to building food supply chain resiliency by introducing a sustainable way for people to grow food year-round in any climate.

We believe that healthy food is a right, not a luxury. For this reason, we are dedicated to making fresh food accessible to anyone, anywhere, any time with the tools, training, and support they need to be successful in their growing operations.

Sustainability Initiatives



Soil Conservation

- Hydroponic solution — uses no soil



Land Conservation

- 2.5 acres of annual production in a 40' x 8' container that occupies only 320 sq.ft
- 100x more land-efficient than traditional soil agriculture



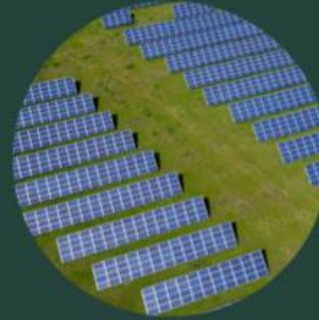
Water Conservation

- 99% more water efficient than traditional soil agriculture due to closed loop system and HVAC
- Water positive in humid climates



Minimizing Food Miles

- Place farms at point of consumption
- Average transportation miles under 20 vs. thousands for typical lettuce grown in US



Energy Use

- Continuously improved Kg/kWh due to Freight Farms and industry improvements
- Partnership with Arcadia to provide clean energy in US
- Working on providing other options

An industry leader with proven success in the field

Founded 12 years ago, Freight Farms has grown to the largest connected network of container farms in the world.

- 2,000+ trained farmers operating 600+ farms
- Customers across 50 states, 42 countries, and 5 continents – from Alaska to Kuwait
 - 70% For-Profit: Institutions, restaurants, and small businesses focused on direct-to-consumer, grocery, and hospitality
 - 30% Nonprofit: Split between academic institutions and community-based organizations
 - Both growing rapidly in total, with institutional growth outpacing small business farmers
- The only container farming solution with proven customer economics



Freight Farms &

Food Banks



Tulsa, Oklahoma



Buffalo, New York



Minneapolis, Minnesota



Brooklyn Park, Minnesota



Grove City, Ohio

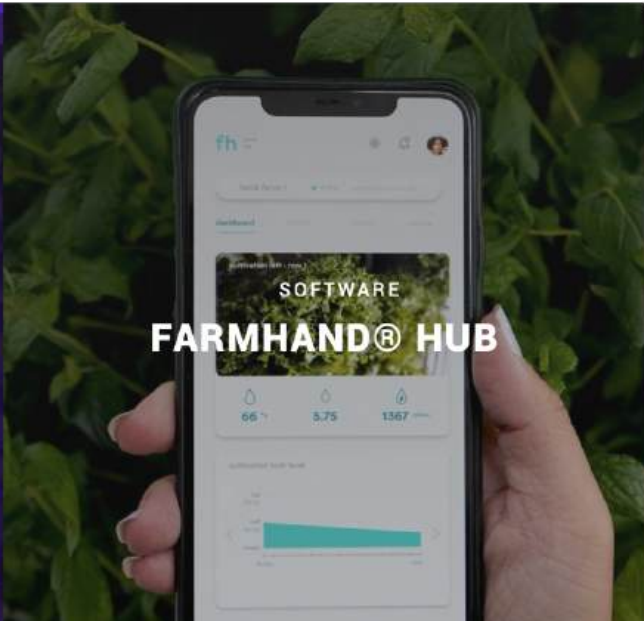


Houston, Texas



Wallingford, CT

Our Solutions



Hardware Overview

Greenery™ S

The Greenery™ S is a complete commercial farm within 320 square feet. Operators can successfully grow hundreds of high-value crops, such as lettuces, leafy greens, herbs, roots, edible flowers, and more.

Commercial-Scale Precision Growing

- 40-foot shipping container
- Footprint of 320 square feet
- 30 labor hours/ week
- 99% less water than traditional agriculture
- 5 gallons of water usage/ day
- 13,000 plant sites
- 990 heads of lettuce /week
- 500+ crop varieties
- 2-6 ton annual harvests

Proprietary Technology

- Specialized Growing Areas
- Dynamic LED System
- Adaptive Climate Control
- Precision Nutrient Delivery
- Automation and Remote Farm Control
- 11 Patent Families



Software

Farmhand® Hub

Freight Farms' proprietary and industry leading software inspires confidence in every operator and takes the guesswork out of farming.

Production Management

- Remote Monitoring & Control
- Climate & Equipment Automation
- Production Planning
- Pre-set Recipes
- Yield Tracking
- Data Visualization & Almanac

Operation Management

- Almanac
- Activity Tracking
- Alerts & Notifications
- Tasks & Permissions
- Academy & Training
- Integrated Community & Support



Services

Support & Refillables

Our Client Services team works tirelessly to help our Freight Farmers unlock their potential. We offer all farmers a full suite of services, including comprehensive onboarding, training, logistics coordination, technical support, and much more!

Onboarding and Farm Launch

- Zoning Approval
- Farm Site Preparation
- Farm Launch

Ongoing Support & Digital Resources

- On-Demand Technical and Remote Support
- Data Analysis & Optimization
- Regular Check-Ins
- On-Site Support Visits
- Knowledge Base
- Community

Certified Training

- Farm Camp In Boston
- Farmhand Academy
- On-Site Training and Launch

Recurring Fulfillments

- Proprietary Blend of Granular Nutrients
- Nutrient and Kit Subscriptions
- Curated Kits and Supplies



A woman with long blonde hair, wearing a black t-shirt and black gloves, is smiling and holding a single green leaf. She is standing in a vertical farm, with rows of lush green plants growing in a structured, multi-tiered system. The background shows the white structural elements of the farm.

Now the Numbers

Start-Up Investment

Product	Price
Greenery™ S	\$165,000 - \$169,000
Training	\$1,250 - \$10,000
Delivery	~\$4.50 a mile
Site Preparation	~\$1,000

Average Startup Cost: \$180,000



Monthly Operating Expenses

Item	Price
Farmhand	\$200
Electricity	\$450~\$915 (151 - 305 Kwh a day at \$0.10/kwh)
Grow Supplies	\$390 - \$456
Water	\$30-\$65
CO2	\$90 - \$180
Labor	20-35 hours
Rent	TBD
Packaging	\$25-\$250
Maintenance	\$0-\$250

Average Monthly Operating Cost: \$1,650





Next Steps..

Thank you!

freightfarms.com | [@freightfarms.com](https://twitter.com/freightfarms)



SMALL FOOTPRINT, BIG IMPACT

In just 320 sq. ft, the Greenery™ S is capable of growing the equivalent of 2.5 acres of traditional farmland. One farm can produce 2–6 tons of produce each year.

