

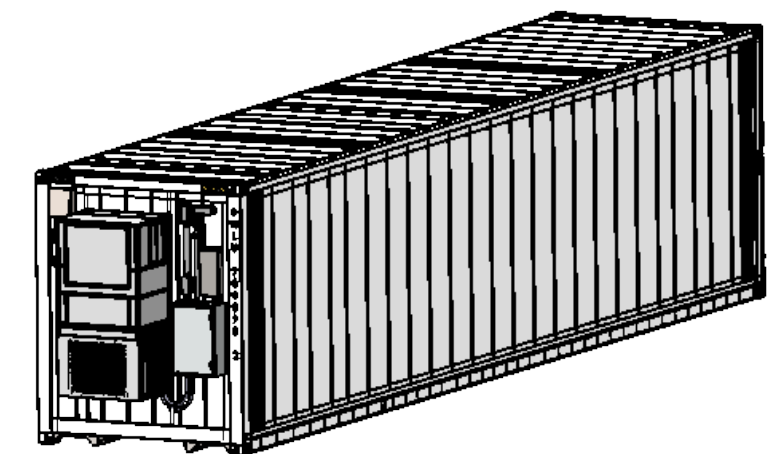
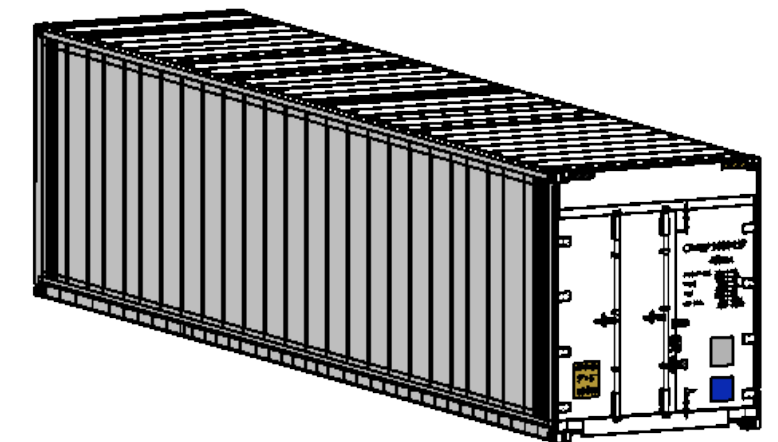


GREENERY S

Contents

1. Requirements
2. Container, Door, Site Dimensions
3. Service-End Components and Dimensions (HVAC, PLUMBING, ELECTRICAL)
4. Internal View

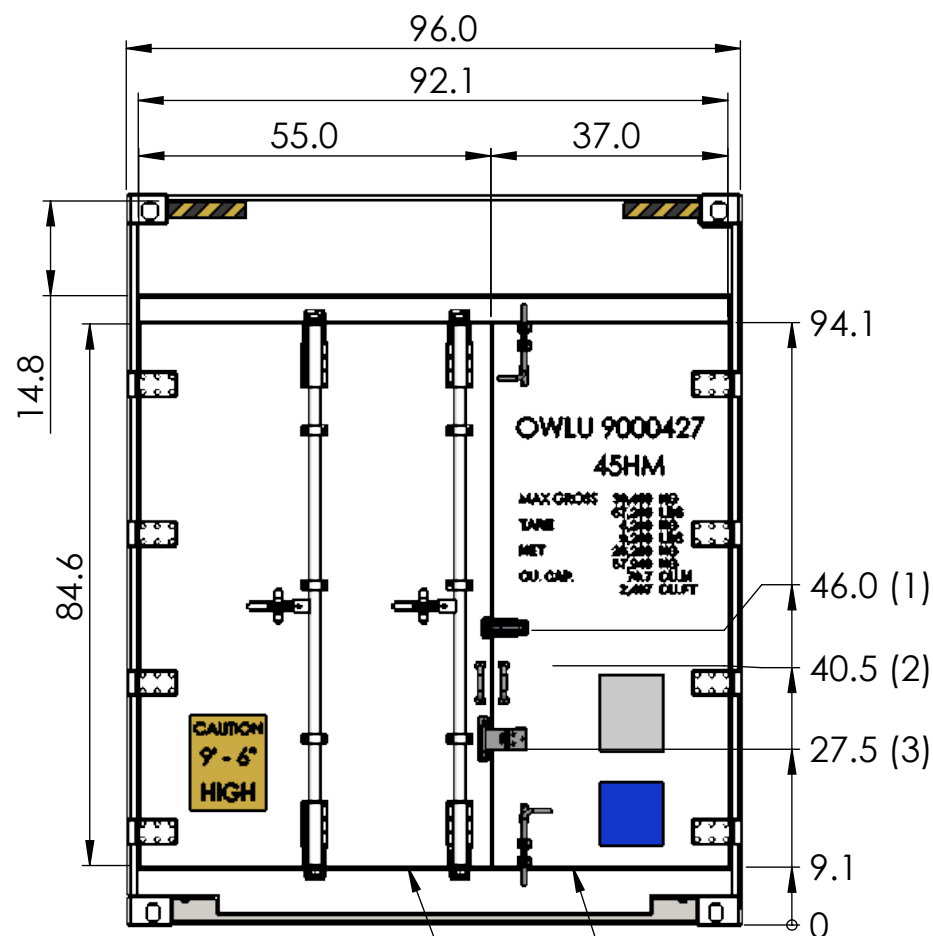
Main Power	<p>240V AC Split-phase (240V AC Phase to Phase Voltage)</p> <p>60Hz 150 Amp Main Breaker</p> <p>#0 (1/0) AWG wiring</p> <p><i>Electrical hookup must comply with all local and state code requirements. Consult your site electrician.</i></p> <p><i>Freight Farms will provide parts list and instructions for 208V, 100A 3-phase conversion</i></p>
Wifi Data	5 GB/month
Plumbing	<p>3/4in GHT thread spigots (see sheet 3) <100psi</p> <p>Water Usage: ~5gal/day Main Tank Capacity: 88gal Seed Tank Capacity : 31gal</p>
HVAC	<p>Cooling: 3 tons, 36,000 BTU at 95°F Ambient Heating: 9kW Refrigerant: R-410A EPA Compliant</p>
Insulation	R-28
Ambient Temperature Range	-40°F - 120°F
Site Dimensions <i>with Door & HVAC clearance</i>	52ft x 10ft
Shipping Weight	Approximately 8 tons (16,000 lbs)
Foundation Preparation	Asphalt, trap rock, railroad ties, sonotubes, or a concrete pad
International (50Hz Mains Electric)	Operation requires modifications & add-ons (Transformer, frequency converter or alternate HVAC unit)



PROPRIETARY AND CONFIDENTIAL
 THE INFORMATION CONTAINED IN THIS DRAWING IS THE SOLE PROPERTY OF FREIGHT FARMS. ANY REPRODUCTION IN PART OR AS A WHOLE WITHOUT THE WRITTEN PERMISSION OF FREIGHT FARMS IS PROHIBITED.



DOOR VIEW

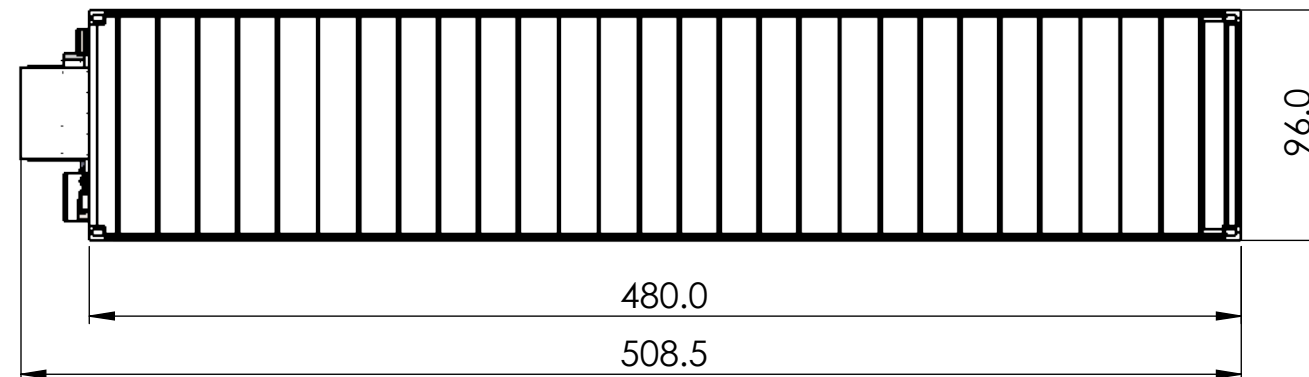


- (1) Latching Handle
- (2) Secondary pull handle
- (3) Padlock bolt

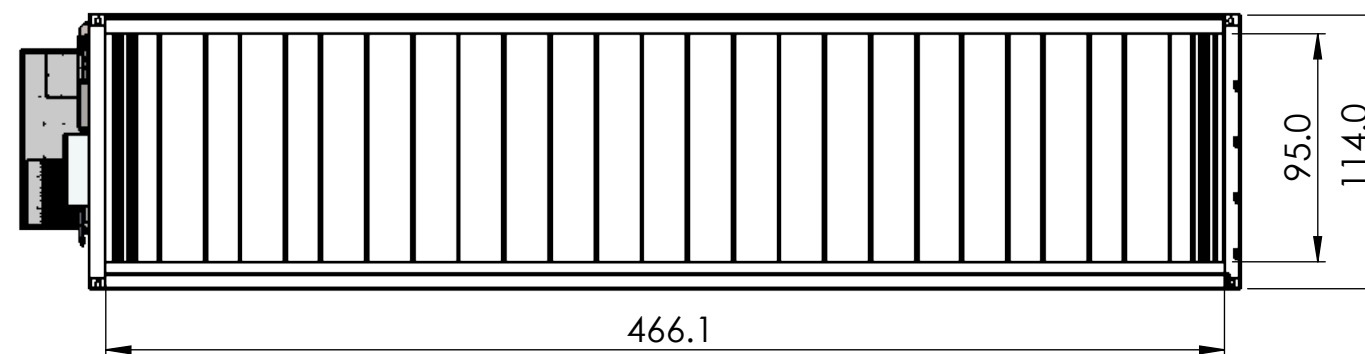
Main Entry door
84"x37"

Service Entry door
84"x55"

TOP VIEW



LEFT SIDE VIEW



Site Area dimensions: 52ft x 10ft
with Door & HVAC clearance

TITLE:
**Door and Container
Dimensions**

PROPRIETARY AND CONFIDENTIAL
THE INFORMATION CONTAINED IN THIS
DRAWING IS THE SOLE PROPERTY OF
FREIGHT FARMS. ANY
REPRODUCTION IN PART OR AS A WHOLE
WITHOUT THE WRITTEN PERMISSION OF
FREIGHT FARMS IS PROHIBITED.

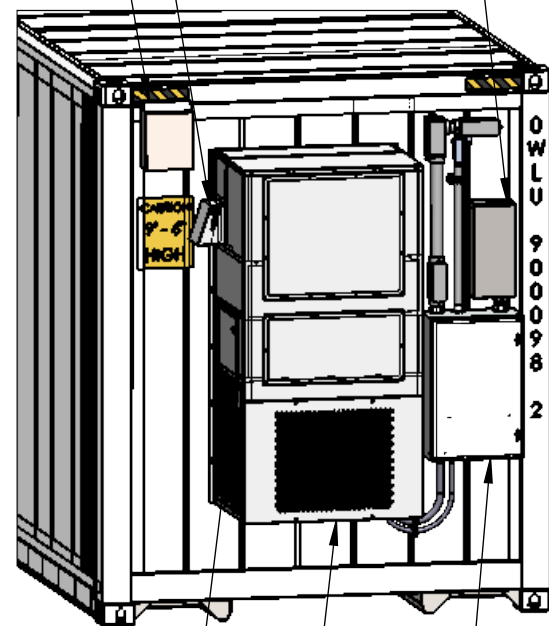
SIZE B	DWG. NO.	REV B
WEIGHT:		SHEET 2 OF 4



BACK (EQUIPMENT) VIEW

Equipment protrudes from frame.

HVAC Intake Vent
 HVAC Exhaust Vent
 Main Circuit Breaker Load Center

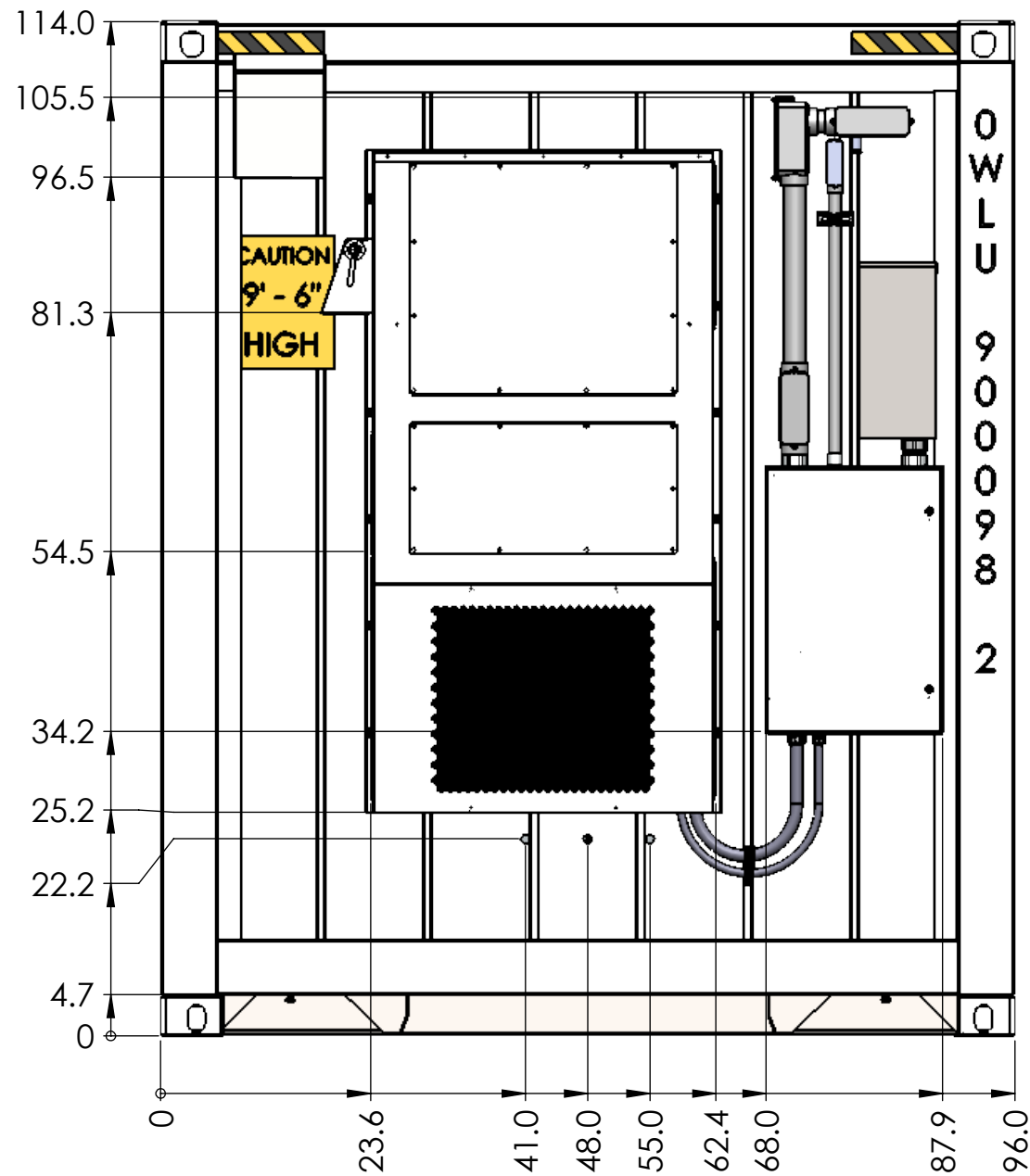


HVAC electrical service panel (side)

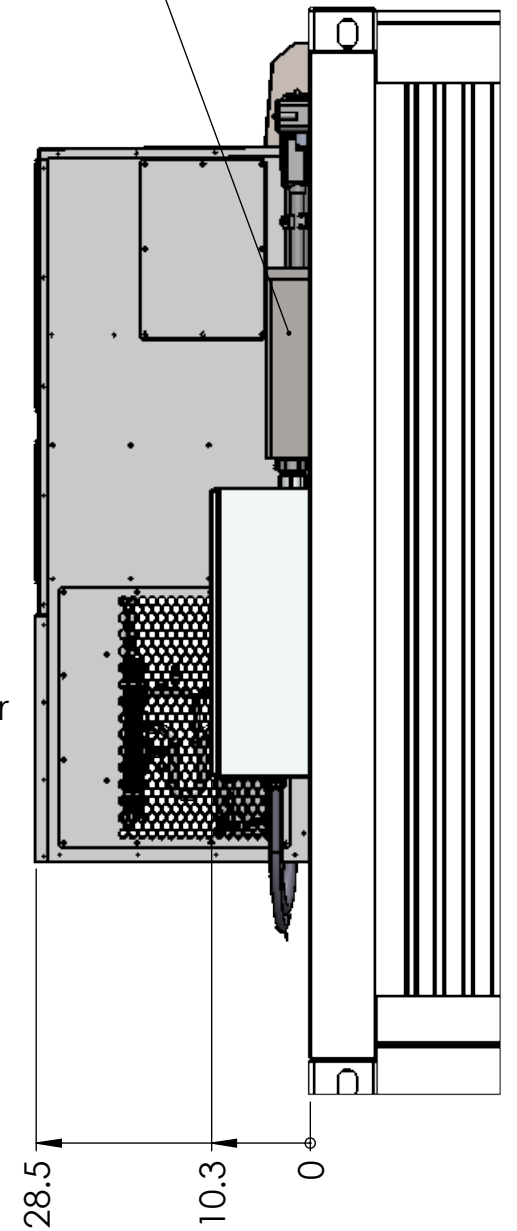
HVAC Air handling unit

Electrical Control Cabinet
 Circuit Breakers &
 Wifi or Ethernet
 connection

Electric connection
 (punch right side)



(+ 5ft)
 Clearance for
 HVAC
 circulation



TITLE:
 Equipment Dimensions

PROPRIETARY AND CONFIDENTIAL
 THE INFORMATION CONTAINED IN THIS
 DRAWING IS THE SOLE PROPERTY OF
 FREIGHT FARMS. ANY
 REPRODUCTION IN PART OR AS A WHOLE
 WITHOUT THE WRITTEN PERMISSION OF
 FREIGHT FARMS IS PROHIBITED.

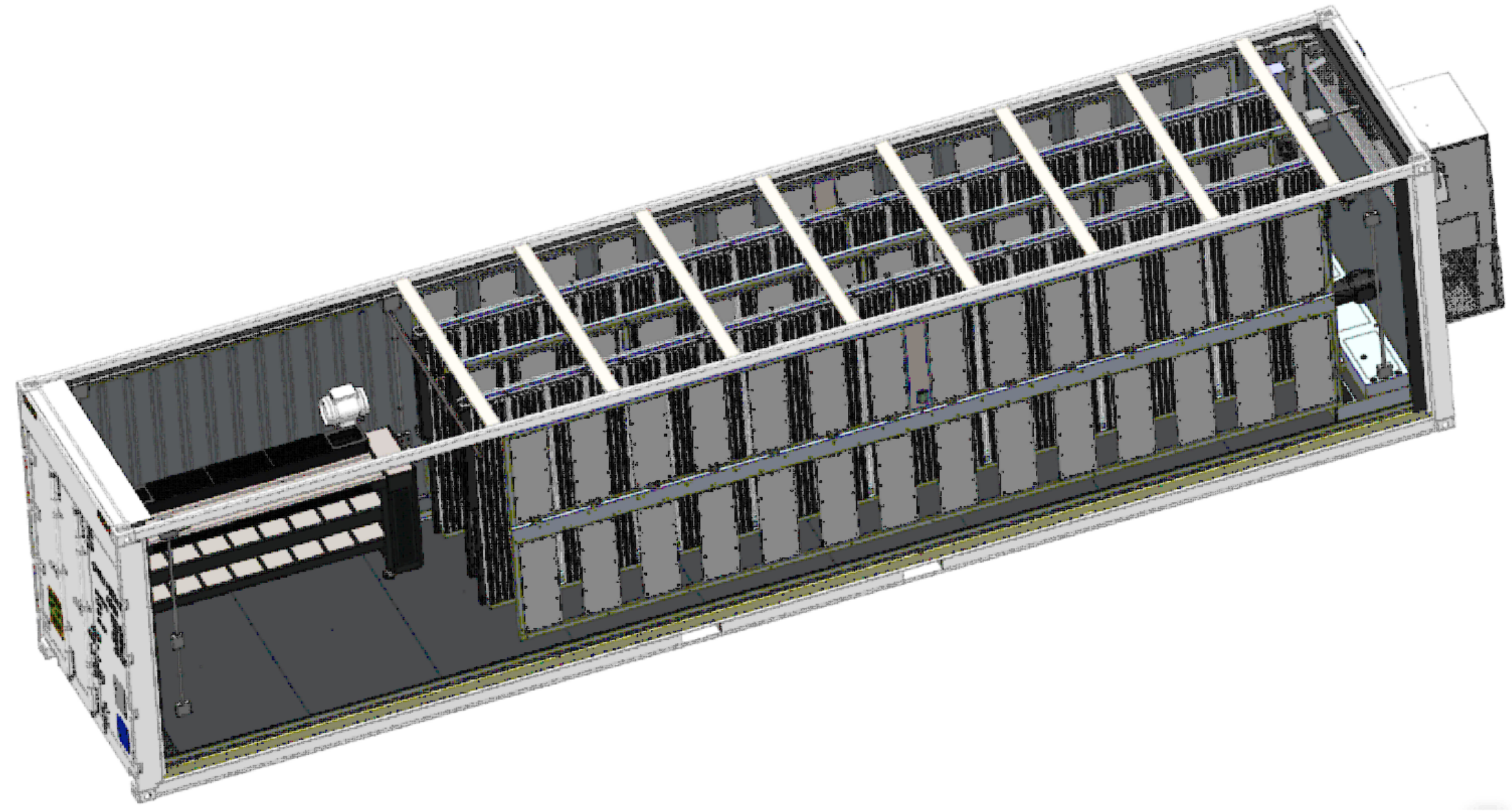
SIZE B	DWG. NO.	REV B
WEIGHT:		SHEET 3 OF 4

4

3

2

1



B

B

A

A

4

3

2

1

PROPRIETARY AND CONFIDENTIAL
 THE INFORMATION CONTAINED IN THIS DRAWING IS THE SOLE PROPERTY OF FREIGHT FARMS. ANY REPRODUCTION IN PART OR AS A WHOLE WITHOUT THE WRITTEN PERMISSION OF FREIGHT FARMS IS PROHIBITED.